

12 Malvern House, Nassau Street, Fitzrovia, London, W1W 7AB



**Flat to Rent**  
**1 Bedroom**  
**£530 pw**

**Contact:**

Residential Lettings

020 7843 9180

## Description

One -bedroom flat to rent in Fitzrovia.

This spacious one bedroom apartment comprises of open plan kitchen – living room, wooden floors & modern bathroom. The building & apartment retains original period features including sash windows, original staircases with wrought iron balusters and an oak handrail.

The property sits on the third floor of our period mixed-use building located on the corner of Riding House Street and Nassau Street directly opposite the landmark Fitzroy Place development.

- Attractive Period Building
- Available Immediately
- Central Heating
- City Centre Location
- Common Parts Maintained To High Standard
- Entry Phone System
- Excellent Transport Links
- Hard Wood Flooring In Living Room
- Separate Bathroom
- Walking Distance From Tube Station
- Wooden Floors

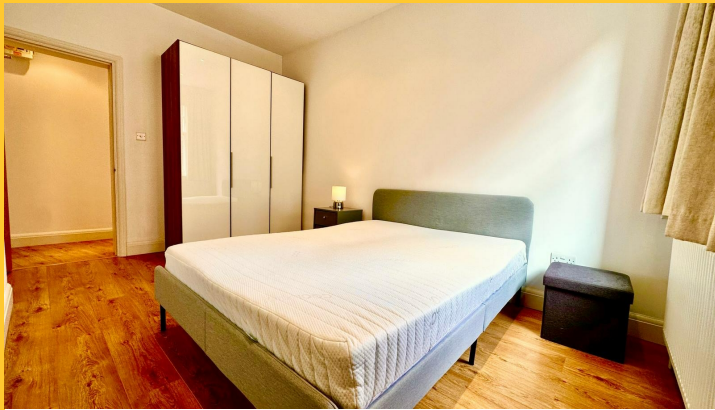
## Your Notes

# Pearl & Coutts

020 7843 9180

# TO LET

12 Malvern House, Nassau Street, Fitzrovia, London, W1W 7AB



Adjacent to Soho, Fitzrovia is one of London's trendiest areas having developed a prestigious and longstanding association with the capital's TMT, fashion, film and music industries.

Public transport links are excellent with Oxford Circus (Victoria, Central and Bakerloo lines) and Tottenham Court Road (Northern and Central lines) stations in very close proximity.

There are no bills Included in the rent & there is no allocated parking included with this property. However, residents can apply for on street residents parking through the council. Additional costs will apply.

AVAILABLE NOW