

10 Malvern House, Nassau Street, Fitzrovia, London, W1W 7AB



**Flat to Rent**  
**2 Bedrooms**  
**£600 pw**

**Contact:**

Residential Lettings

020 7843 9180

## Description

Two-bedroom flat to rent in Fitzrovia.

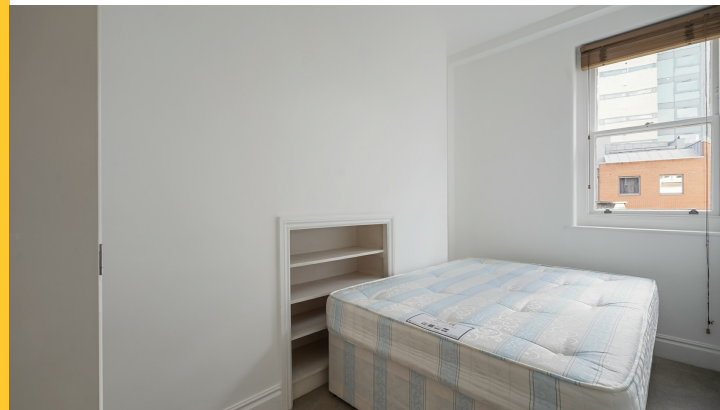
This attractive two-bedroom apartment offers two generously sized bedrooms, a separate living room and kitchen, and a wealth of original period features, including sash windows, original staircases with wrought-iron balusters, and an oak handrail.

Situated on the second floor of a characterful mixed-use period building, the property occupies a prominent corner position at Riding House Street and Nassau Street, directly opposite the landmark Fitzroy Place development.

- Attractive Period Building
- Central Heating
- City Centre Location
- Common Parts Maintained To High Standard
- Entry Phone System
- Excellent Transport Links
- Hard Wood Flooring In Living Room
- Separate Bathroom
- Walking Distance From Tube Station
- Wooden Floors

## Your Notes

10 Malvern House, Nassau Street, Fitzrovia, London, W1W 7AB



Bordering Soho, Fitzrovia is one of London's most vibrant and sought-after neighbourhoods, renowned for its longstanding connections to the capital's technology, media, telecommunications, fashion, film, and music industries.

The property benefits from excellent transport links, with Oxford Circus Station (Victoria, Central, and Bakerloo lines) and Tottenham Court Road Station (Northern and Central lines) both just a short walk away.

Please note the following:

There are no bills included in the rent & there is no allocated parking included with this property. Residents must either apply for on street residents parking through the council or source their own parking privately  
Additional costs will apply.

Available from 7th July.