

56 Maple Street, Fitzrovia, London, W1T 6HW



**Flat to Rent**  
**2 Bedrooms**  
**£646 pw**

**Contact:**

Residential Lettings

020 7843 9180

## Description

Two-bedroom flat to rent in Fitzrovia.

We are delighted to offer this spacious converted 2 bed apartments on the first floor of this Central London period building.

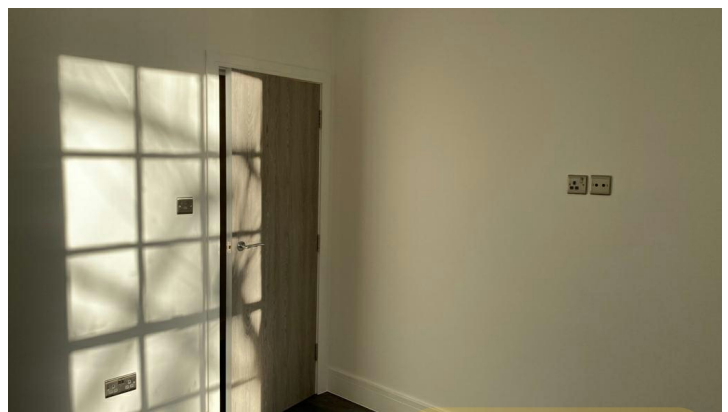
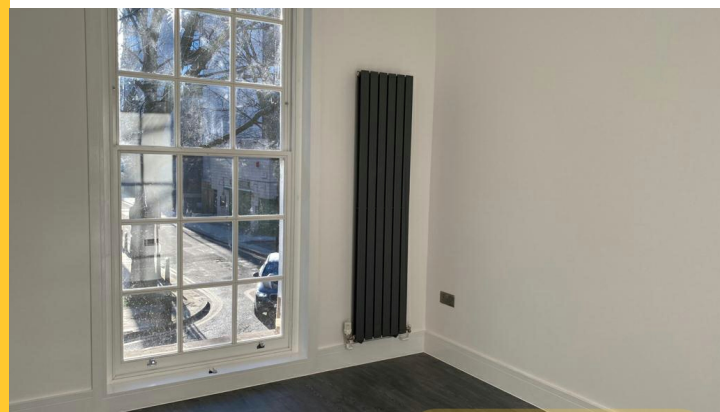
The accommodation consists of a spacious and bright living room with floor to ceiling sash windows.

The kitchen diner is off the living room on a separate level via a staircase. The kitchen is a generous size, allowing plenty of space for a table and chairs. Appliances includes :

- Available Immediately
- Central Heating
- Double Glazing
- Entry Phone System
- Period Features
- Separate Bathroom
- Separate Kitchen
- Walking Distance From Tube Station

## Your Notes

56 Maple Street, Fitzrovia, London, W1T 6HW



gas hob, electric oven, integrated washer dryer, dishwasher, and a full height fridge freezer. There is ample storage throughout.

The two double bedrooms are a generous size situated to the south of the building. They also benefit from the floor to ceiling windows.

The family bathroom has bath and shower above with heated towel rail.

The property is located in the heart of the Fitzrovia district of London's West End, equal-distant between Oxford Street and Euston Road.

Oxford Circus (Bakerloo, Central & Victoria lines), Goodge Street (Northern line), Warren Street (Northern & Victoria lines) and Great Portland Street (Hammersmith & City, Circle and Metropolitan lines) Underground stations are within walking distance from the property.

56 Maple Street, Fitzrovia, London, W1T 6HW

Please note the following:

There are no bills included in the rent & residents must apply for parking via the council or source their own parking privately.