

37 Grafton Way (2), Fitzrovia, London, W1T 5DD



Flat to Rent
1 Bedroom
£325 pw

Contact:

Residential Lettings

020 7843 9180

Description

One bed flat covering the entire second floor of this mid terraced period building.

The accommodation has been fully renovated to a high standard and offers a crisp, fresh interior with a spacious open plan living area with a fully fitted kitchen, a modern tiled bathroom and one double sized bedroom.

The property is located near to the junction with Euston Road and Tottenham Court Road in the heart of London's fashionable Fitzrovia. Warren Street (Victoria & Northern Lines), Goodge Street (Northern Line) and Euston Square (Metropolitan, Circle and Hammersmith & City Lines) Zone 1 Underground stations are within a short walking

- Available Immediately
- Central Heating
- Entry Phone System
- Newly Refurbished
- Separate Bathroom
- Walking Distance From Tube Station

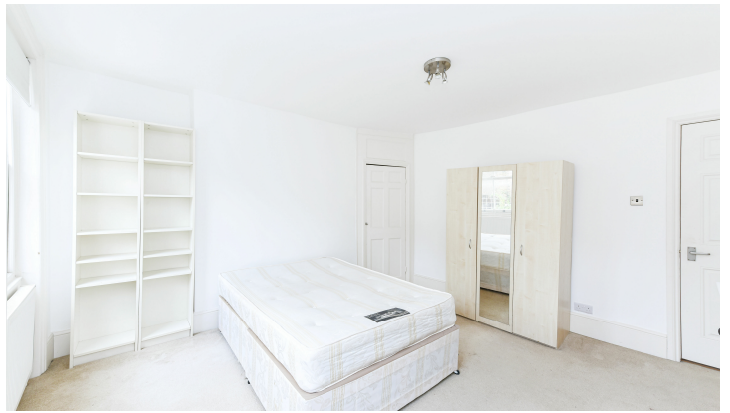
Your Notes

Pearl & Coutts

020 7843 9180

TO LET

37 Grafton Way (2), Fitzrovia, London, W1T 5DD



distance.

AVAILABLE NOW.